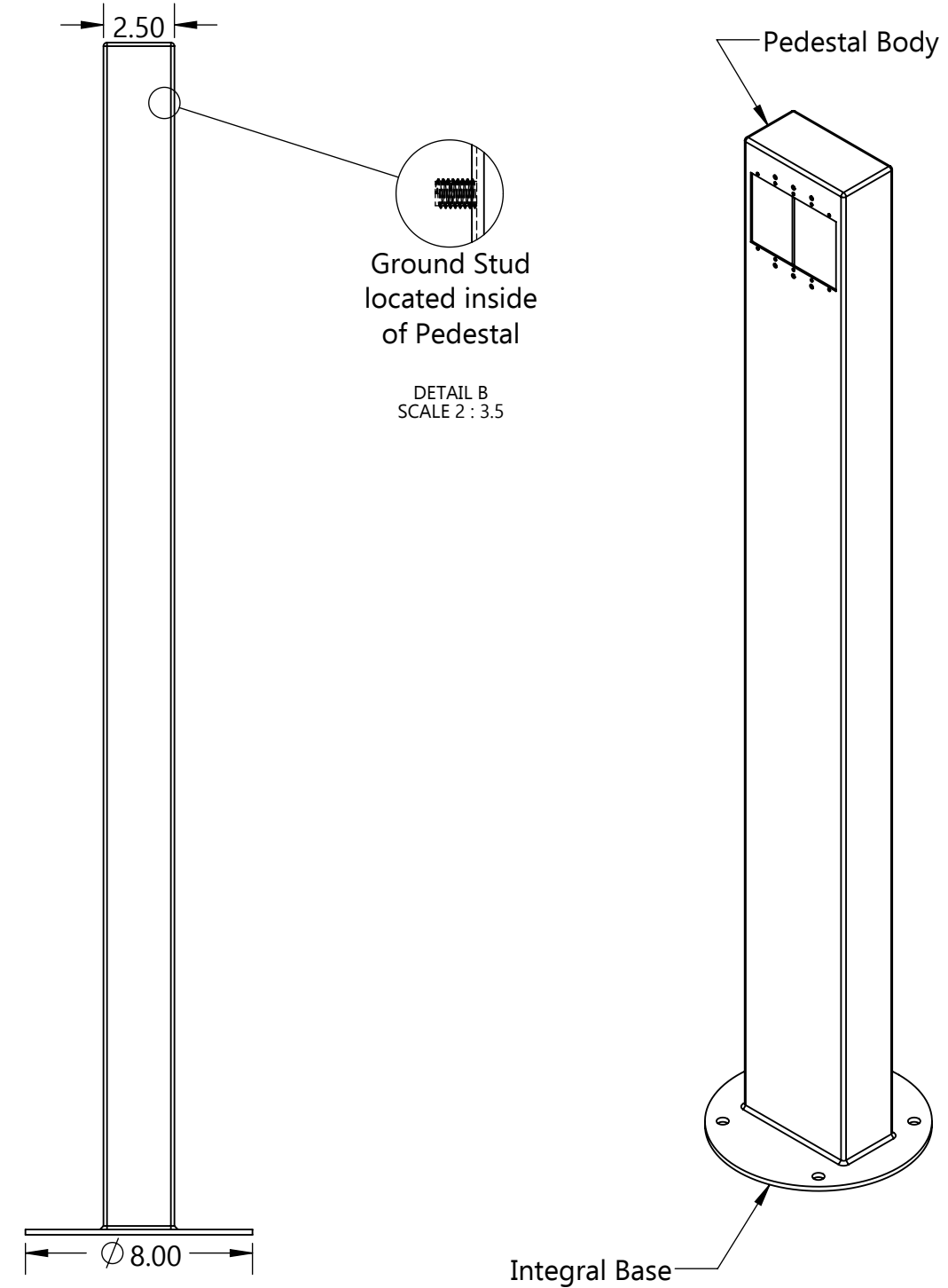
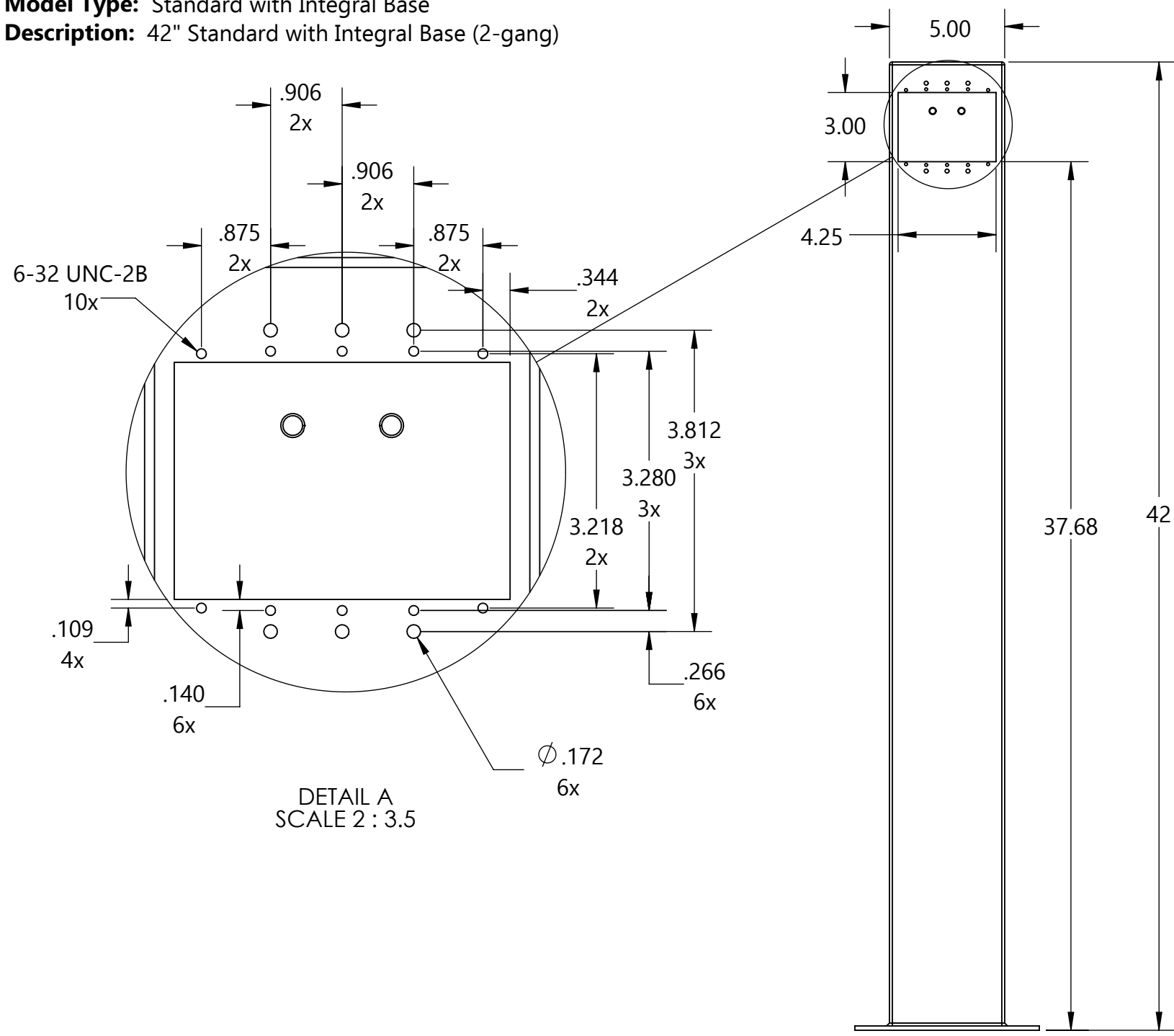


Model Type: Standard with Integral Base
Description: 42" Standard with Integral Base (2-gang)



Part Numbers with Finish Indicated		Material	
Powder coated stainless steel			
Black (B)	2P42-C-B	Pedestal Body	14 gauge stainless steel
Gray (G)	2P42-C-G	Integral Base	7 gauge stainless steel
Bronze (BRZ)	2P42-C-BRZ		
Green (GN)	2P42-C-GN		
Brown (BR)	2P42-C-BR		
Custom (CSTM)	2P42-C-CSTM (paint chip req'd)	Packaged Dimensions	11" x 11" x 45"
Brushed stainless steel	2P42-SS	Packaged Weight	19 Lbs.

Base Mounting Hardware (included)
 (4) 3/8"-16 x 2-3/4" S.S. Wedge Anchors
 (4) 3/8"-16 S.S. High Crown Acorn Cap Nut
 (4) 3/8" x Ø 7/8" x .05" Thick S.S. Flat Washer

